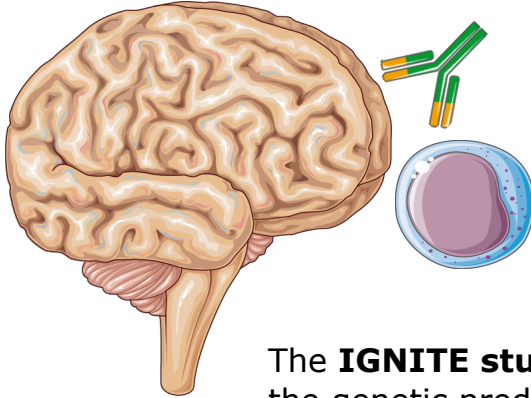


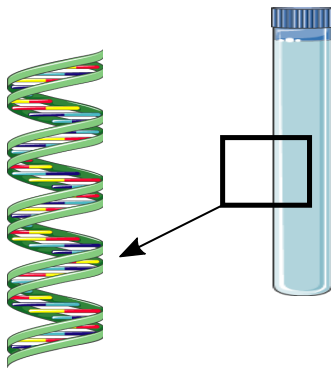
Immunogenetics in immune-mediated encephalitis

Autoimmune encephalitis and related disorders comprise a group of diseases in which the immune system abnormally reacts against the brain or other parts of our nervous system

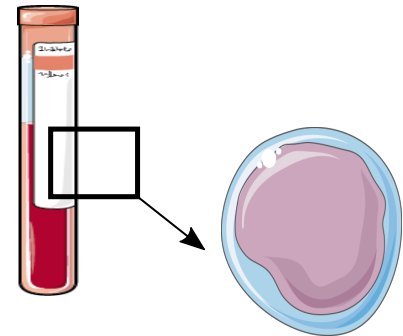


The cause of autoimmune encephalitis is unknown but it is possible that a genetic predisposition exists

The **IGNITE study** conducted at **Stanford University** aims to investigate the genetic predisposition to autoimmune encephalitis and related disorders



How?



Saliva samples will be used to obtain DNA, where our genetic information is contained

Blood samples will be used to isolate the cells from the immune system

Do you want to participate?

If you want to participate, please scan the **QR code** or visit <https://redcap.link/0wuj3o43>

You will have to complete a survey and upload your medical notes attesting your diagnosis, including the antibody detection in serum and/or CSF



Our team will get back to you regarding whether or not you meet the eligibility criteria

If you are eligible, we will send you an Informed Consent to be signed electronically, as well as an online questionnaire (10 minutes) and a kit for saliva sample
You can also donate a blood sample (additional, voluntary)